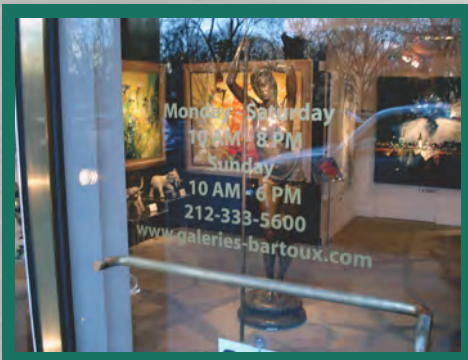


# signsvisual™ industries

ARCHITECTURAL SIGNS AND VISUAL COMMUNICATION



servicing Boston, MA since 1991.



## cut-out metal letters & logos.

This sign medium meets the requirements necessary for achieving a distinctive image and corporate identity campaign. Graphics are precisely cut using state of the art water jet technology, laser cutting, computer aided routing or custom hand crafting methods providing precise letterforms and even finish appearance from all angles for interior and exterior applications.

Available in a variety of materials and finishes, edges of each letter-form are fine sanded to perfection before the product is ready for the final coating of your choice.

Materials: brass, bronze, copper, stainless steel, aluminum, and titanium

Finishes: satin, mirror polish, chrome plated, gold plated, oxidized, anodized, duranodic, high gloss, baked enamel painted (gloss/matte), powder coat and polyurethane paint.

Letters are available in size range from 1" to 24" (depending on material and finish), and available in thickness range from 1/4" to 3" (depending on material and finish).



• satin aluminum cut 1/4" thick letters with logo



• natural satin cut aluminum letters with spacers



• waterjet cut bronze letters flush mount



• cut-out satin brass letters, clear coated



• satin brushed aluminum letters and logo



• satin bronze anodized letters 1/4" thick





## cut-out acrylic letters.

Acrylic letters and logos capture exceptional definition of your corporate identity and branding.

Very cost effective and versatile in its form, this option utilizes high end laser cutting technology for smooth solid cut shapes and letters.

And with extensive high quality paint finishing techniques and polishing processes, the dimensional effect leaves its indelible mark. With the capacity to cut up to 1.00" thick solid acrylic, your finished sign will surely be the masterpiece of your visual environment.

Available in 1/4" , 1/2" , 3/4" , and 1.00" thicknesses with Pantone paint matching in matte, flat, semi-gloss, and hi-gloss finishes



● cut-out 1/2" thick acrylic letters painted



● cut-out 3/4" thick acrylic letters painted



● cut-out painted acrylic letters with spacers



● cut-out acrylic 1/4" thick letters



● custom acrylic letters on curved wall



● custom acrylic wall plaque





## etched metal signage.

Metal etching is the ancient art of engraving with acid on metal.

Etched graphics provide a two-dimensional, permanent message.

Virtually any size, shape, or style of plate can be faithfully reproduced to your specifications.

Etched signs are available in aluminum, brass, bronze, copper, and stainless steel with surface finishes in satin or mirror polish.

Custom in-fill painted pantone colors are at your disposal to capture true color fidelity of your corporate image and brand.

Etched signage provide an exceptional look with a classic touch. An impressive way to communicate!



● etched brass satin finish, paint filled



● etched stainless steel elevator panels



● etched aluminum without color fill



● etched stainless steel building plaque



● etched aluminum plate with paint-filled colors



● etched satin brass plaque w/black in-fill





# vinyl die-cut graphics.

Signs Visual Industries' state of the art computerized vinyl graphic system produces fine quality pre-spaced letters and logos for various signs such as point of purchase displays, aisle markers, window graphics, fleet and vehicle graphics, architectural signs, etc.

Unlike traditional production methods, pressure sensitive vinyl has more color consistency, more durability and is better able to maintain fine detail as these graphics adhere to most smooth surfaces.

As versatility is always a factor, vinyl graphics are suitable for reverse application on glass. Vinyl graphics of various materials and colors (including custom color matching) are available for both interior and exterior use.

Applications suitable: store window signage, interior office walls, glass doors, museum walls, flat metal and plastic, and more.



● store window signage with logo



● knockout vinyl applied on store window



● gold leaf vinyl on entrance overhead glass



● seasonal promotion retail store window



● frosted film cut graphics interior office glass



● die cut lettering applied on gallery wall





## etched glass signage.

Etched glass signs are a delight to produce and a joy to observe.

Exquisite clear fine glass is etched with the lettering and graphics of your choice and can be color-filled or clear frosted finish. Polished or beveled edges really bring out its classy style.

Glass signs are mounted with high quality chrome plated hardware for an elegant all around finish.

With the protrusion off the wall, glass signs really add a depth and extra dimension to your corporate image.

Sign types include: clear glass, crystal glass, clear plexiglass, cast acrylic, frosted glass, and more.



● etched clear glass with in-fill painted logo



● etched glass with paint-filled logo and letters



● clear cast acrylic with digital graphics



● etched glass with LED lighting and frame



● etched glass and natural frosted logos



● etched glass with in-fill black painted lettering





# cast metal plaques.

By combining the old world art of sand casting and modern technological advances, virtually any type of design can be achieved through flat relief or dimensional sculpture.

An extensive selection of letter styles, borders, finishes and background textures are available for bronze, aluminum or yellow brass to meet your needs.

Identify businesses, buildings, tenants, rooms & individuals. Cast bronze & aluminum plaques project an image of quality, distinction and stability.

Recognize groups or individuals in honor of achievements or service. The importance of accomplishments is enriched with cast bronze and aluminum tributes prominently displayed.



● cast brass plaque with leatherette texture black



● cast bronze plaque polished face and border



● cast bronze plaque with logo and border



● cast aluminum plaque with green texture



● cast bronze plaque of complex fill logo



● oval cast aluminum plaque with texture





## custom exterior signage.

Exterior signs comprise of mainly metal components and extrusions in the form of custom metal plaques, fabricated dimensional metal letters, and custom built sign boxes.

These signs are constructed utilizing precise craftsmanship and engineering for seamless installations onto any type of building facade or structure.

Storefront signs including custom awnings are manufactured to promote wayfinding awareness and create high traffic environments.

The customization aspect of these exterior signs allows for a creative and inventive process yielding an overall superlative finished product.



● fabricated metal plaque with painted edges



● fabricated stainless steel letters 3" deep



● fabricated polished steel letters over satin plate



● exterior fabricated sign panel



● custom entrance awning with gold accents



● parking garage wayfinding signage







# engraved & silkscreened signs.

Silkscreened signage represent our sophisticated line of interior sign products. With the ability to capture very fine detailed graphics and logos, silkscreen printing achieves exceptional results.

Available on a variety of materials including metals, plastics, glass, granite, acrylics, and more.

Engraved signs provide a permanence and powerful communicative impression with any interior sign program.

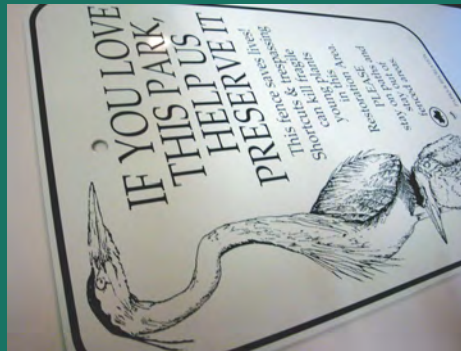
Deep etching including laser engraving and sandblasting techniques are available on many PVC and plexiglass materials as well as wood and crystal.



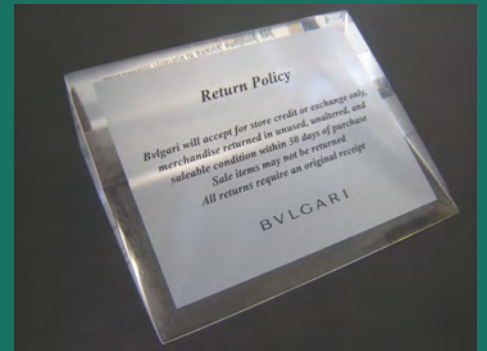
● silkscreened graphics over brass plates



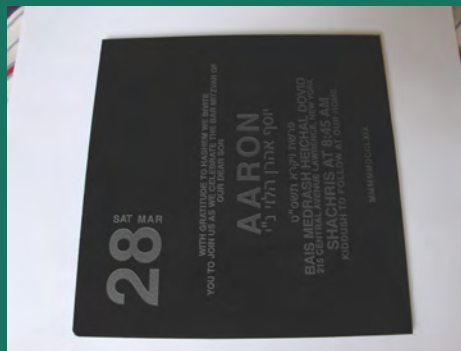
● laser etched interior hotel signage



● silkscreened image onto baked white metal



● silk-screened clear acrylic block



● custom engraved plexiglass invitation



● custom silk-screened clear anodized aluminum





# custom printed banners.

Achieve maximum impact with your banners and flags when selecting from our full line of custom designed and constructed products.

Explore various sizes, colors, and fabric options, including sewn nylons, canvas, satin vinyl and tyvek using silkscreen, applique, and large format digital printing.

Our digital printing technologies offer exceptional high-resolution quality and versatility. Construction techniques include sewn, hemmed, stitched, welded, pole-pocket, grommets, printed or appliqué.

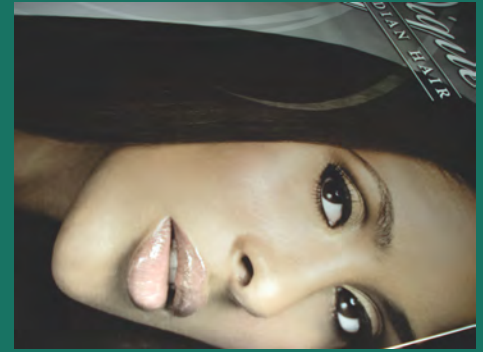
Our choice of substrates range from sturdy weather-resistant types to ethereally sheer fabrics that respond to the whims of subtle movement of air - each one amplifying the mood of the message and application environment.

Sizes are virtually limitless with panel stitching. We offer single piece prints as wide as 16 feet x unlimited lengths.

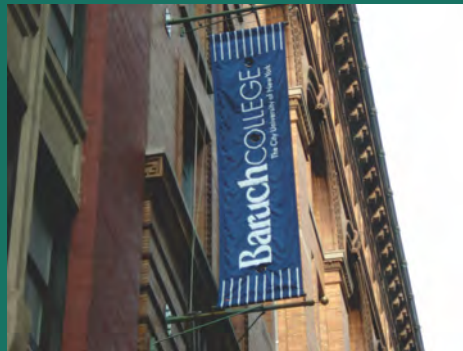
Mounting and hanging system options allow you to get the most from your banner and flag purchases for permanent and seasonal display.



● scaffolding banner machine screw mount



● digital printed full color event banners



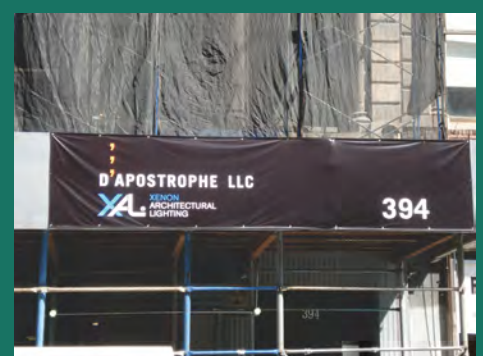
● nylon flag dye printed vertical post mount



● building mesh banner 8 ft x 24 ft



● step and repeat banner for backdrop



● digital printed scaffold banner knockout black





## modular and ADA signage.

This unique sign system meets virtually every in-field parameter from simple retrofit of an existing sign to a totally new signage program for facility identification, whether it be interior or exterior, private business or health care institution.

Graphics are custom engineered with polymers and acrylic or aluminum lamination for durability. ADA graphics can be applied to almost any signage substrate.

Wide selection of color combinations to select from and the ability to incorporate your institutional design theme throughout your sign program while maintaining heavy consistency.



● polymer ADA sign with braille in PMS red



● polymer ADA sign raised white lettering



● polymer ADA sign blue background



● custom directory with changeable strips



● custom directory with header plate



● directory sign in plexiglass





● satin bronze cut-out logo on walnut wood



● cut-thru stainless steel plate



● custom fabricated steel mirror polish letters



● painted metal letters on frosted glass panel



● hospital freestanding pylon signage



● satin aluminum plaque with etched copy



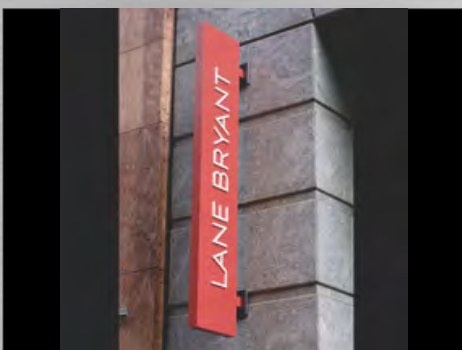
● custom directory with changeable strips



● exterior painted metal letters



● post and panel sign for hospital



● exterior custom fabricated signage



● cast bronze plaque 36" x 36"



● dimensional letters for school lobby